

FEATURES:

Radio connection

Max. power of transmitter 10 dBm

INPUTS:

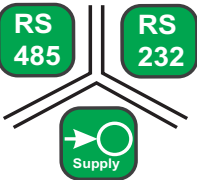
RS 232

RS 485

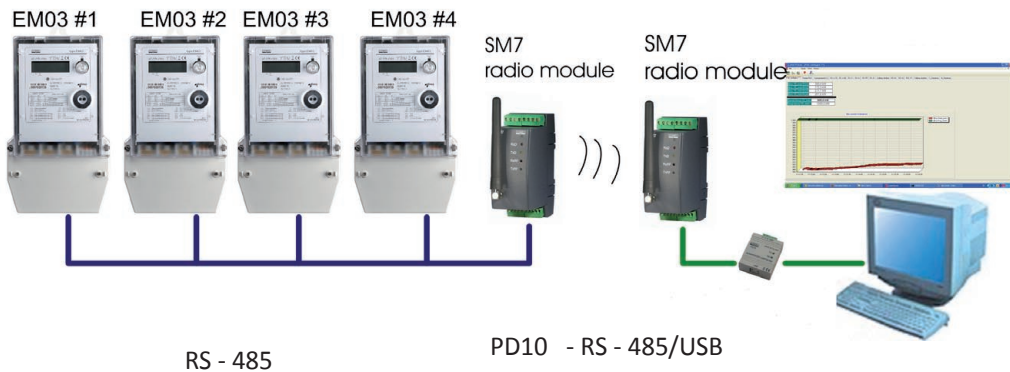
OUTPUTS:

RF 433 / 868 MHz

GALVANIC ISOLATION:



- □
- □
- 10
- □
- □
- □ 4800...115200 bit/s.
- □ RS-485 and RS-232
- □
- □



RS-232	:	8N1, 8N2, 8E1, 8O1, 7E1, 7O1
RS-485	:	4800...115200 bit/s
	:	433, 868 MHz
	:	-20, -15, -10, -5, 0, 5 dBm (additionally 10 dBm only for 433 MHz)
	:	-110 dBm
	:	4800, 9600, 19200, 38400, 76800 bit/s
	:	NRZ, Manchester
	:	300 m (433 MHz)
	:	10
	:	50 Ω SMA

Export department:
Tel: +48 68 45 75 139/
/276/ 305/ 386
Fax: +48 68 32 54 091
e-mail: export@lumel.com.pl

LUMEL S.A.
ul. Stubiczka 1
65-127 Zielona Góra
POLAND
WWW.LUMEL.COM.PL

	45 x 120 x 100 mm	
	< 0.5 kg	
	: IP20	: IP20
	(EN-60715)	

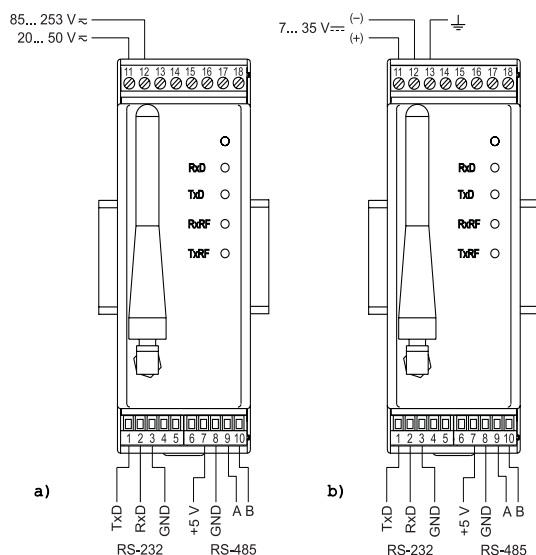
RATED OPERATING CONDITIONS

Supply voltage	85...230...253 V a.c./d.c. or 20...24...50 V a.c./d.c. or 7...35 V d.c.	Input power: ≤ 2.5 VA Supply frequency : 40...50...440 Hz
Temperature	ambient: 0...23...45°C	Storage: -20...70 °C
Relative humidity	< 95%	Inadmissible condensation
Operating position	any	
Time of readiness obtainment since the device connection:	2 sec	

SAFETY AND COMPATIBILITY REQUIREMENTS

Electromagnetic compatibility	noise immunity	acc.to EN 61000-6-2
	noise emissions	acc.to EN 61000-6-2
	fastness against supply decays	acc.to EN 61000-6-4
Pollution level	2	acc.to EN 61010-6-1
Instalation category	III	
Max.phase-to-earth operating voltage	for supply circuit: 50 V for other circuits: 50 V	

CONNECTION DIAGRAMS



a) for supply : 85...253 V a.c./d.c. and 20...50 V a.c./d.c.
b) for supply: 7...35 V d.c.

ORDERING

Radio transmission module - SM7	X	X	X
Supply voltage:			
85...230...253 V a.c./d.c.	1		
20...24...50 V a.c./d.c.	2		
7...35 V d.c.	3		
Radio transmission frequency:			
433 MHz		1	
868 MHz		2	
Acceptance tests:			
without additional quality inspection requirements			0
with an extra quality inspection certificate			1
acc.to customers request *			X

* after agreeing with the manufacturer

Ordering example:

The code **SM7 - 1 2 7** means:

- SM7** - module of SM7 type
- 1 - supply voltage: 85...230...253 V a.c./d.c.
 - 2 - frequency 868 MHz
 - 7 - with an extra quality inspection certificate

SEE ALSO:



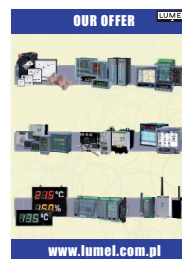
MR03 - radio transmission module



SM8 - GSM/ GPRS transmission module



LUMEL proces software



For more information about LUMEL's products please visit our website:
www.lumel.com.pl

Export department:
Tel: +48 68 45 75 139/
/276/ 305/ 386
Fax: +48 68 32 54 091
e-mail: export@lumel.com.pl

LUMEL S.A.
ul. Słubicka 1
65-127 Zielona Góra
POLAND
WWW.LUMEL.COM.PL